



NEW
MAGELLANO

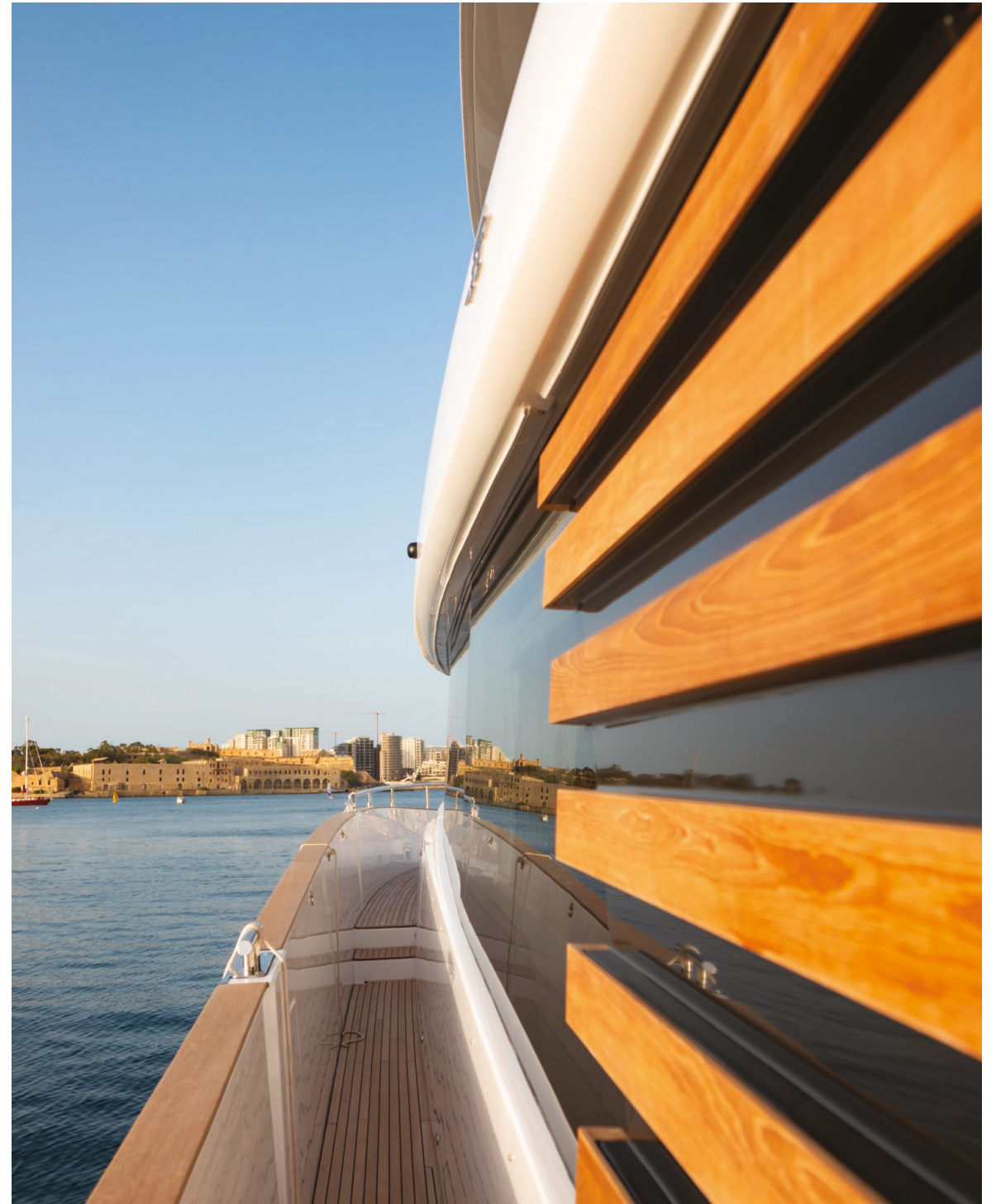
66



PRELIMINARY PROJECT PRESENTATION

NEW MAGELLANO 66

The Azimut crossover









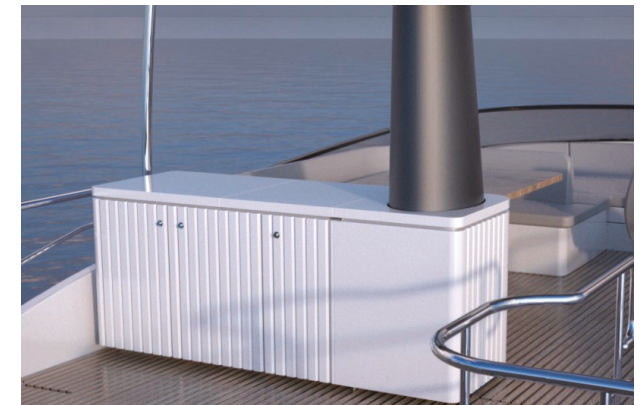


The flybridge is impressively large,
with a stern lounge area that can also incorporate an American bar.



THE FLYBRIDGE

LET THE BEAUTY SURROUND YOU







Versatility is to the fore with the cockpit, where the dining zone can be transformed into a spacious relaxation zone where the owner and guests can stretch out in the shade, just a few tantalising metres above the water.

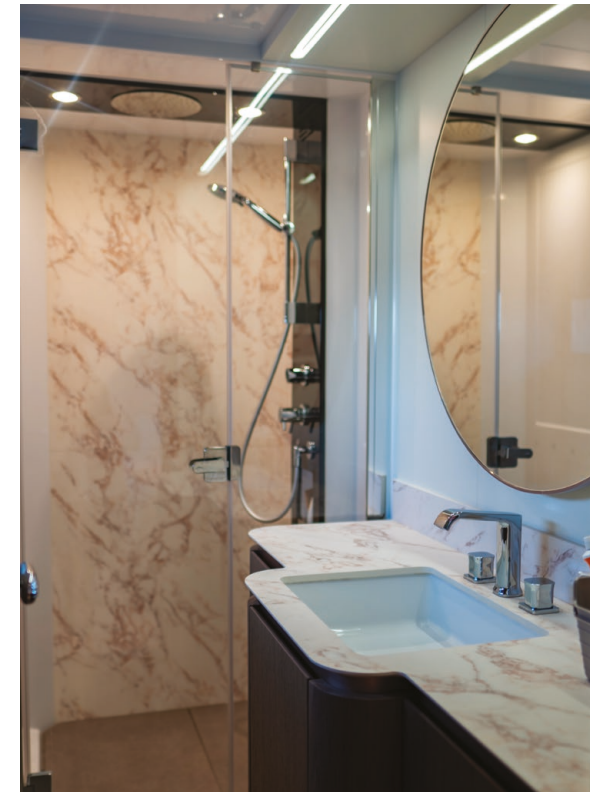










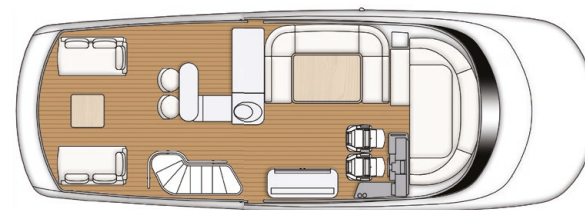




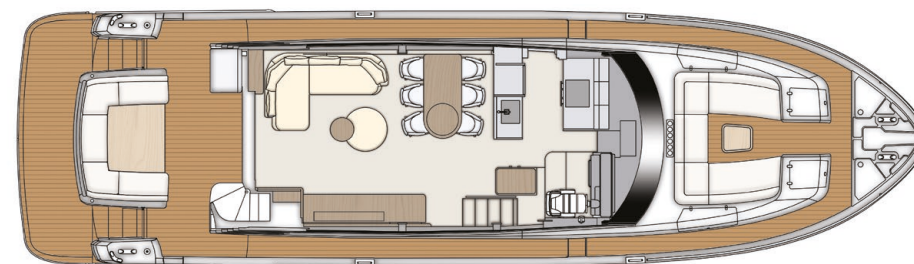
MAIN TECHNICAL DATA

NEW MAGELLANO 66

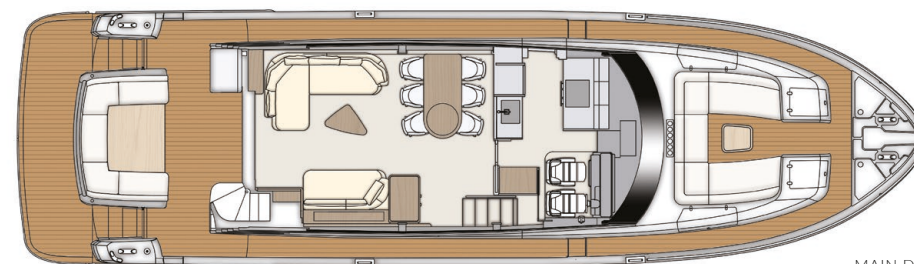
Length overall (incl. pulpit)	20.15 m (66' 1")
Beam max	5.54 m (17' 10")
Draft (incl. props at full load)	1.68 m (5' 10")
Displacement (at full load)	46.4 t (102293 lb)
Engines	2 X 850 HP (625 KW) MAN I6
Maximum speed	up to 23 knots
Cruising speed	19 knots
Fuel capacity	4500 l (1190 US Gal)
Water capacity	1000 l (264 US Gal)
Cabins	3 + 1 (jolly cabin) + 1 crew
Berths	6/8 + 2 crew
Head compartments	3 + 1 crew
Building material	Carbon Fiber + GRP
Keel	Semiplaning Dual Mode
Exterior styling & concept	Azimut Yachts
Interior designer	Azimut Yachts
Hull designer	P.L. Ausionio Naval Architecture & Azimut R&D Dept.
Builder	Azimut Yachts



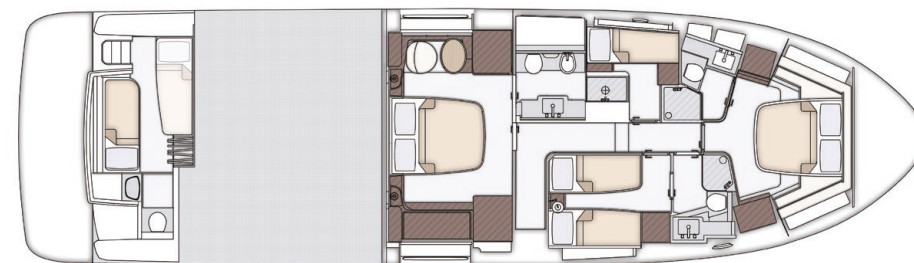
FLYBRIDGE



MAIN DECK



MAIN DECK
ALTERNATIVE LAYOUT



LOWER DECK

NEW
MAGELLANO
66



NEW
MAGELLANO

66
AZIMUTYACHTS.COM

This brochure in no way constitutes a contract of sale for the boatyard's vessels to any person or company. All information contained herein, including but not limited to technical and performance data, illustrations, and drawings, is non-binding and for purposes of illustration only. The information in this brochure refers to the boatyard's standard motoryacht models available as of the date of publication. Technical and descriptive information is valid only to the extent that it pertains to the specific vessel that is the subject of a purchase. Contract terms are valid only to the extent that they are contained in a contract of sale. This document is based on information available at the time of publication. Despite efforts to ensure the greatest possible accuracy, the information contained herein may fail to cover all details, omit technical or commercial changes that may have been made subsequent to publication, describe features that are not present, and fail to envisage all circumstances that might occur. Any illustrations, photographs, diagrams and examples shown in this brochure are included solely for the purposes of illustrating the text. Due to the different features of each vessel, the boatyard assumes no liability for actual use based on the illustrated applications.